



# Atrius Health Equity Foundation

**Closing the Life Expectancy Gap: Insight from Community Leaders**



# Welcome - Thank you for joining us!

## A few housekeeping notes:

- A copy of the slides will be shared after the webinar.
- To ask a question, please use the chat box.
- We will moderate and respond to questions through the chat.

# Tech Overview – Camera, Mic, & Chat

The screenshot displays a Zoom meeting interface. At the top, a green status bar reads "You are viewing Brittany Chen's screen". A "View Options" dropdown menu is open, listing: "Zoom Ratio", "Fit to Window", "Request Remote Control", "Annotate", "Exit Full Screen", and "Side-by-side Mode" (which is checked). The main content is a presentation slide with the following text: "Lincoln County Health and Human Services: Equity Assessment, Training, and Planning Services", "Advisory Committee Visioning Retreat", "May 23, 2022", and the "Health Resources in Action" logo. On the right, a gallery view shows "Another participant" and "You" (highlighted with a yellow border). At the bottom, a control bar includes "Mute" and "Stop Video" (both in a red box), "Invite", "Participants" (2), "Share", "Chat" (in a red box), "Record", and "Leave Meeting".

# Tech Overview - Audio Options

The image shows a meeting interface with a dialog box titled "Choose ONE of the audio conference options". The dialog has three tabs: "Phone Call", "Computer Audio", and "Call Me". Under the "Phone Call" tab, there is a "Dial:" section with a dropdown menu set to "US" and a list of phone numbers: +1 929 205 6099, +1 312 626 6799, +1 669 900 6833, +1 253 215 8782, +1 301 715 8592, and +1 346 248 7799. Below the numbers is the "Meeting ID: 365 224 1905" and the "Participant ID: 2671". A red arrow points from the text "PIN" to the Participant ID. A "Done" button is at the bottom of the dialog. Below the dialog is a meeting control bar with icons for Mute, Start Video, Invite, Manage Participants, Share Screen, Chat, and Record. A red arrow points from the text "Select: 'Switch to phone audio'" to the Mute icon.

**Select:**  
"Switch to phone audio"

**PIN**

Meeting ID: 365 224 1905  
Participant ID: 2671

Done

Mute Start Video Invite Manage Participants Share Screen Chat Record



# Land Acknowledgement

---

We are speaking today about health inequities in Eastern Massachusetts.

This land has historically been home to the Massachusett, Pawtucket, Wampanoag, Nauset, Naumkeag and their neighbors, including the Nipmuc and Agawam.

We acknowledge Indigenous Peoples as the traditional stewards of the land, and the painful history of genocide and forced occupation of these territories, as well as the ongoing processes of colonialism and dispossession.

We challenge ourselves, and all of those gathered here, to work to dismantle these processes of colonialism and dispossession.



Source: Jack Lynch/Enterprise



# Presenters

**Jennifer Masdea, MPH**

Health Resources in Action

**Ann Hwang, MD**

Atrius Health Equity Foundation



**Tariana V. Little, DrPH**

Chat Moderator







## Icebreaker (in the chat!)

- Name
- City/Town
- Favorite Halloween Activity

# Atrius Health Equity Foundation

Created in 2022 due to the conversion of Atrius Health to a for-profit entity



**Invest** ~\$150M  
in assets



**Close the gap** in  
life expectancy



**Focus** on Eastern  
Massachusetts

*Creating vibrant, healthy, equitable communities*



**CLOSING THE LIFE EXPECTANCY  
GAP IN EASTERN MASS:  
LESSONS FROM CHICAGO**  
**NOVEMBER 15, 2023**



11:30 AM - 01:30 PM



Artists for Humanity

**REGISTER NOW**

 [www.atriusfoundation.org](http://www.atriusfoundation.org)

Sign up for our mailing list for updates.

Email: [info@atriusfoundation.org](mailto:info@atriusfoundation.org)

Website: [www.atriusfoundation.org](http://www.atriusfoundation.org)

LinkedIn: [www.linkedin.com/company/ahcf](http://www.linkedin.com/company/ahcf)

# Framework for Input

## Community-Engaged Interventions

Impact upstream factors that shape health, such as:

- Access to health care
- Crime and violence
- Economic opportunity
- Education
- Food access and nutrition
- Housing

## Health Conditions

Address health conditions that lead to premature deaths:

- Behavioral Health (mental health, substance use)
- Chronic Disease (cancer, heart disease, diabetes)
- Perinatal mortality

## Overarching Goal

Close the gap in life expectancy in Eastern MA.



Downloaded freely (Unsplash.com)

# Community Engagement Findings





# Objective

1

Increase AHEF  
visibility in Eastern  
Massachusetts

2

Identify root  
causes,  
community assets,  
and solutions to  
improve life  
expectancy

3

Uncover strategies  
to better embed  
equity into AHEF's  
funding approach

# Methods

---

## What

- **8 community engagement sessions** in Eastern
- Communities selected based on low life expectancy and premature mortality, and for diversity in terms of demographics and geography

## Who

- **112 participants** representing a variety of sectors including CBOs, health care, government, education, and philanthropy

## How

- **Interactive, solutions-oriented** discussions that accommodated various learning styles
- Supplemented with key informant interviews across these communities, a CBO survey and a virtual Open House



# Approach



ROOT  
CAUSES



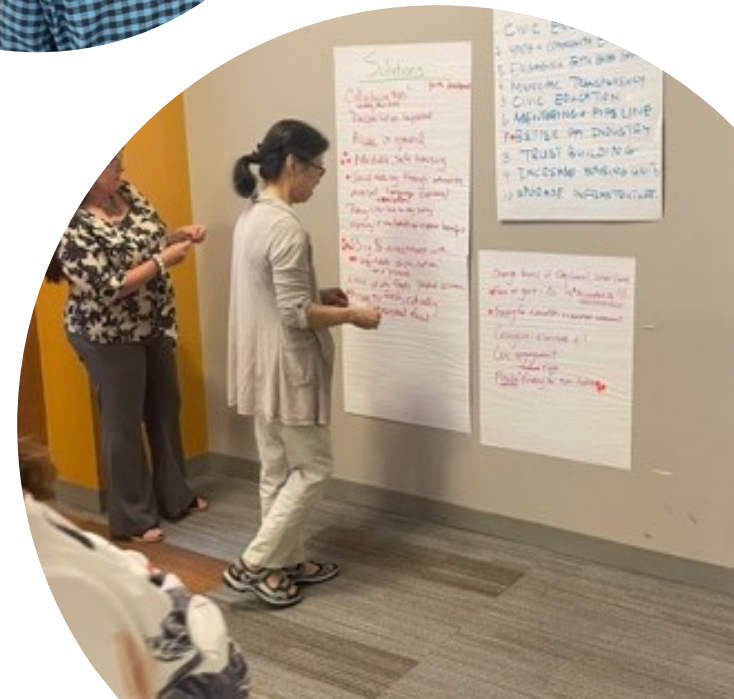
ASSETS



SOLUTIONS

# Approach – cont.

- **Root Causes:** What are the root causes in your community to focus on to improve life expectancy?
- **Assets:** What are the Community strengths we can lean on as we seek solutions?
- **Solutions:** What have you seen work well or what can we build on to address some of these root causes?



# Solutions



Economic Stability



Education and Training



Affordable Housing and  
Infrastructure



Health and Mental  
Wellness

# Economic Stability

---

- Living Wage
- Wealth Building
- Support Grassroots Initiatives
- Micro and Seed Funding






# Education and Training

---

- Holistic Education
- Youth Services
- Workforce Development
- Innovative Approaches








*“Many of the struggles have to do with employment, rooted in education—what does long term funding of education look like—how do we prepare parents as soon as children enter preschool; what does educational attainment at the end of each grade really look like?”*

– Community Engagement Session  
Participant





# Affordable Housing and Infrastructure



*"There is so much connected to what the stability of a home can provide, especially in this area where you don't have things like transportation. It all feeds into other things, even disrupting education if you lose your housing."*

- Community Engagement Session Participant




# Health and Mental Wellness

---

- Healthcare Access
- Mental Health Services





*“Overburdened health system...those of us who are here, it’s been harder to access specialists and primary care because many people came in during COVID seeking services. This has forced some of us to leave the Cape to access services-especially in Pediatrics.”*

– Community Engagement Session Participant



# Considerations for Grantmaking





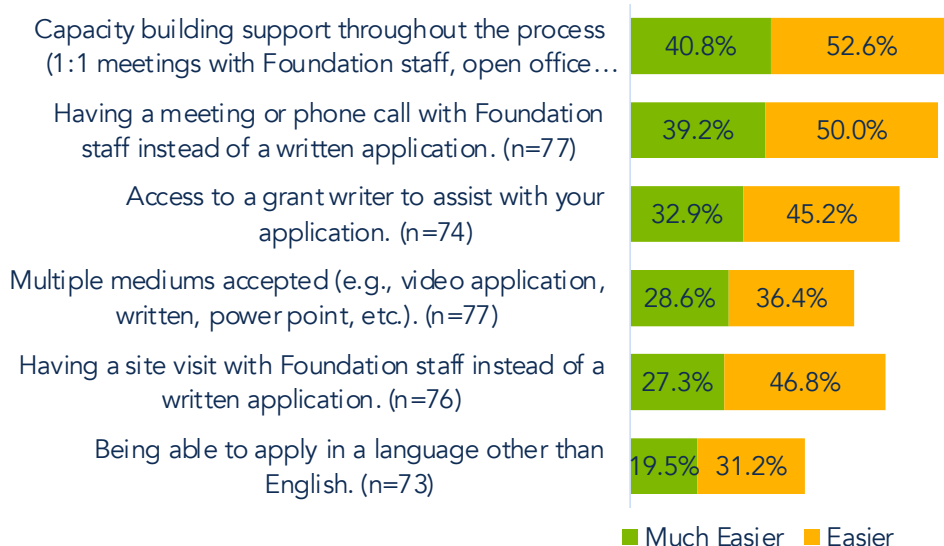
*“When building generational shifts,  
[funders] need to stick around to  
sustain and change [the] community.”*

- Community Engagement Session  
Participant

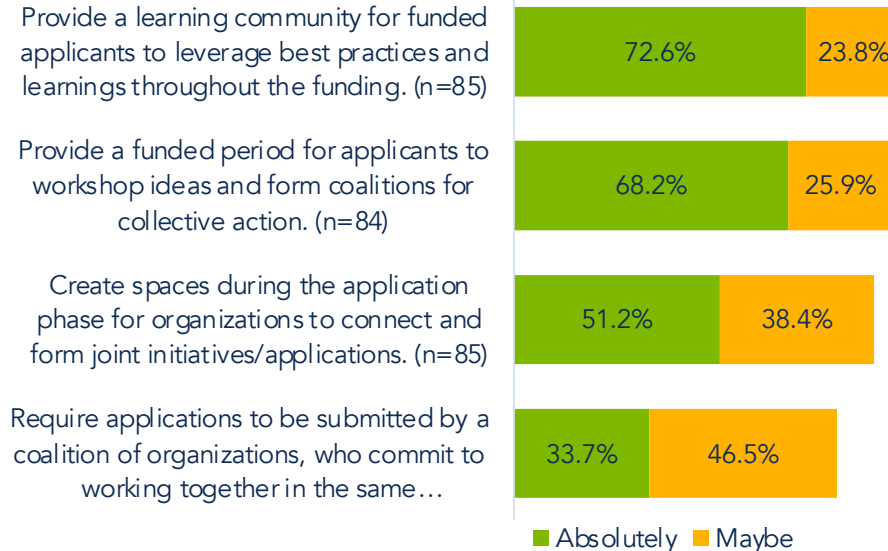


# Considerations for Grantmaking – cont.

What supports and/or structures would make applying for Atrius Health Equity Foundation grants easier in the future:



To promote coordinated, collective action at the community level we should:





Questions?

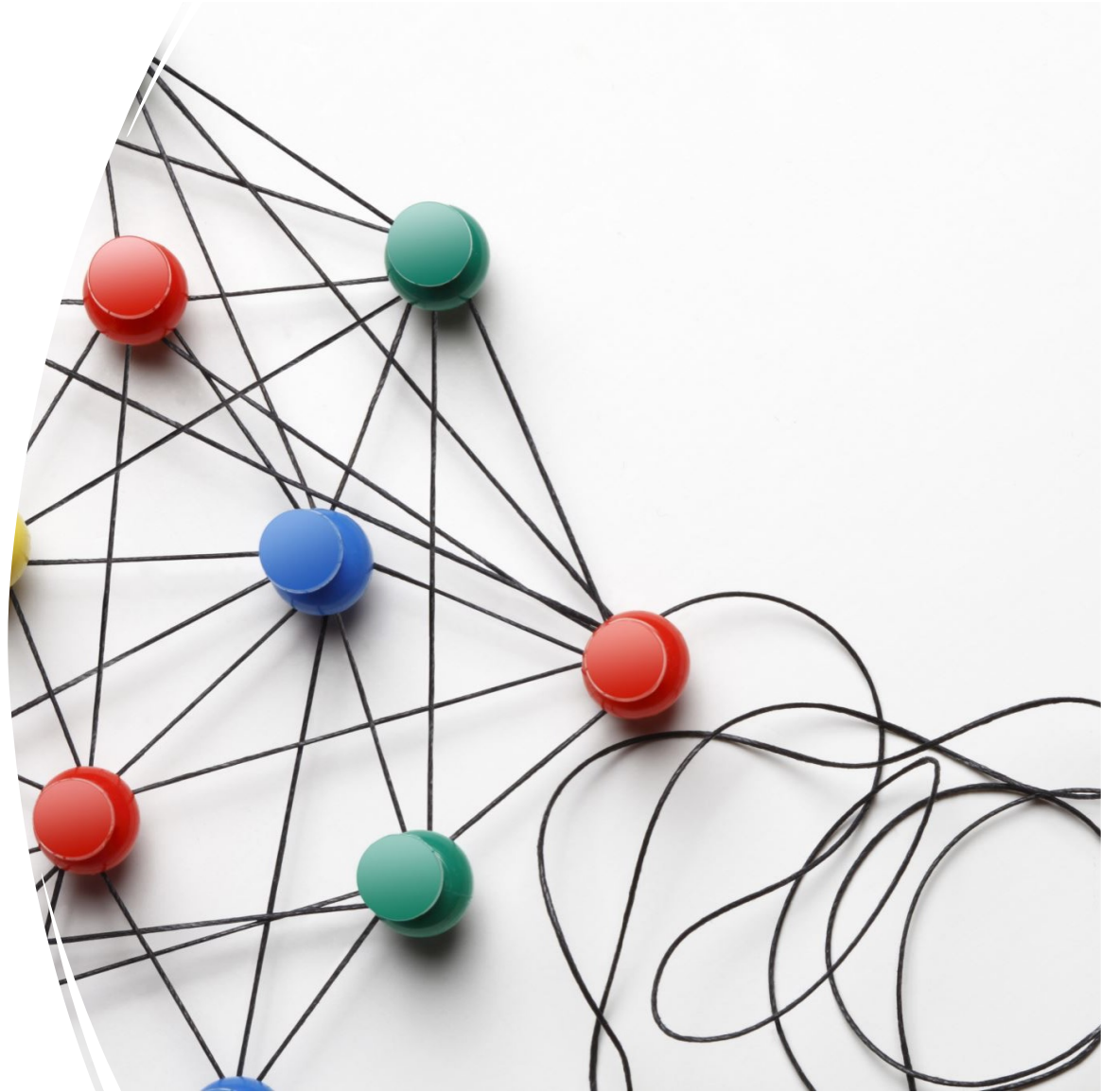
# Reflections from the Foundation



# Our Takeaways

---

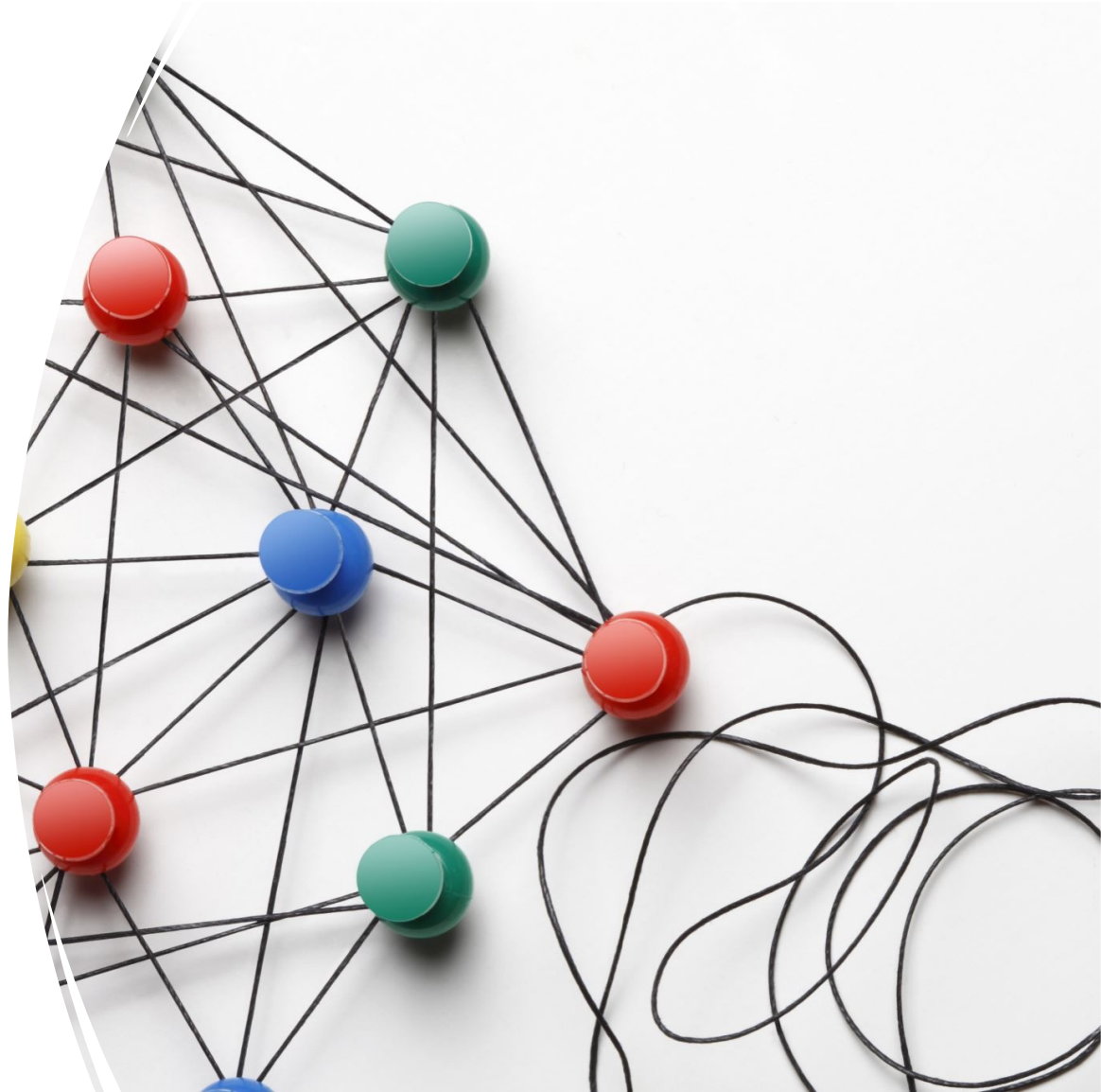
- Life expectancy matters
- Issue areas that surfaced consistently were:
  - economic mobility
  - educational opportunity
  - housing, and
  - access to health/mental health services
- Organizing and policy change are needed for sustained impact



# Our Takeaways – cont.

---

- We will need breadth, depth and persistence:
  - Multiple interventions on multiple root causes
  - Clear, more focused desired outcomes
  - Flexible and sustained funding are key
- Traditional philanthropic practices can be barriers



# Next Steps



## Where to Start?

- Initial focus on economic mobility, recognizing the deep connection between health and wealth
- How might we show improved health outcomes through economic mobility interventions?





# Funding Approach

---

- Synergy within existing ecosystem
- Foundation-led efforts
- Target RFP release by Jan. 15
  - Simple LOI
  - Offer financial & TA support to those invited for full proposals
  - Large-scale, multi-year funding





Questions?



**CLOSING THE LIFE EXPECTANCY  
GAP IN EASTERN MASS:  
LESSONS FROM CHICAGO**  
**NOVEMBER 15, 2023**



11:30 AM - 01:30 PM



Artists for Humanity

**REGISTER NOW**

 [www.atriusfoundation.org](http://www.atriusfoundation.org)

Thank you!

Sign up for our mailing list for updates.

Email: [info@atriusfoundation.org](mailto:info@atriusfoundation.org)

Website: [www.atriusfoundation.org](http://www.atriusfoundation.org)

LinkedIn: [www.linkedin.com/company/ahcf](http://www.linkedin.com/company/ahcf)