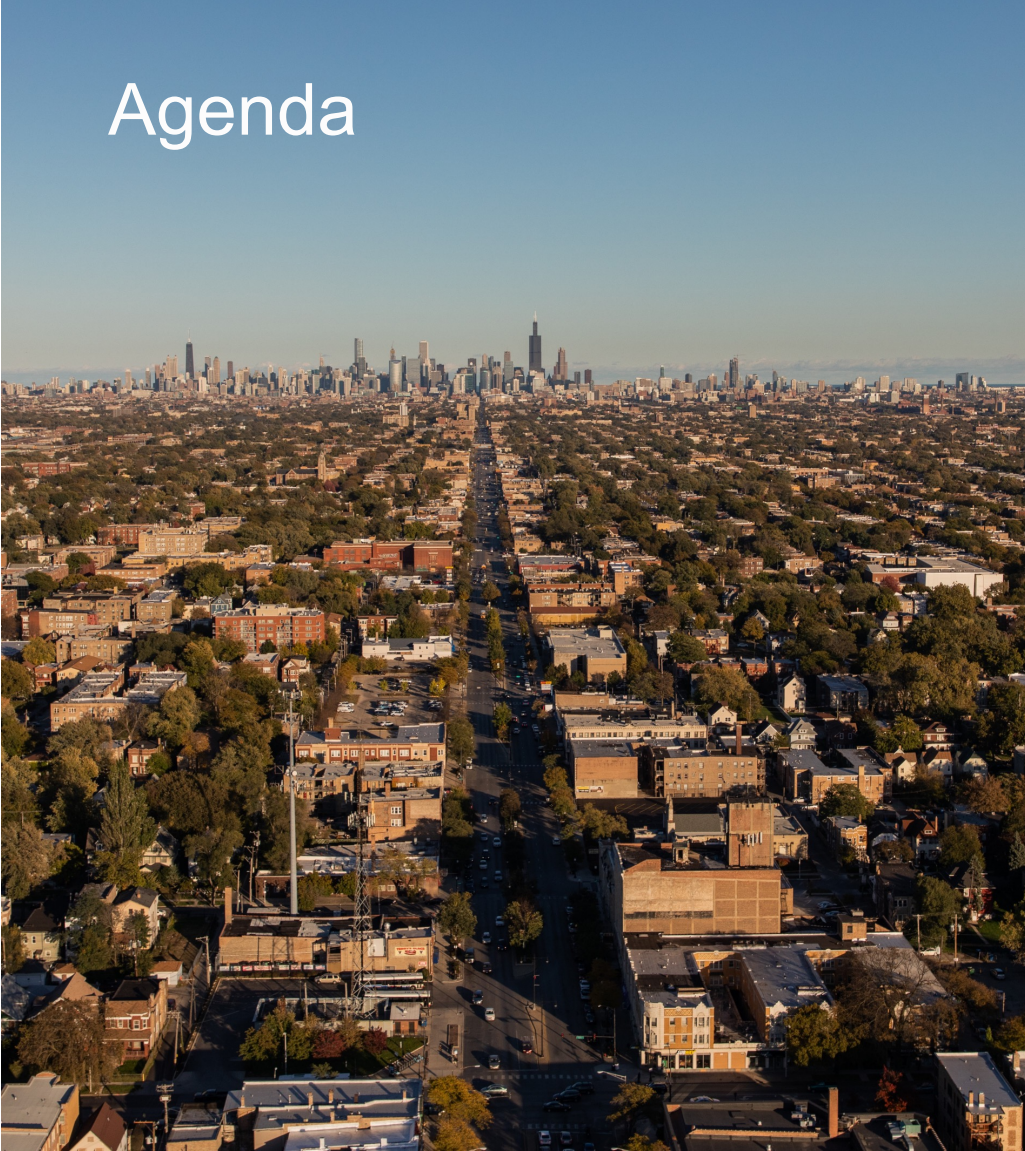


West Side United

Atrius Health Equity Foundation

David Ansell, MD, MPH
Ayesha Jaco, MAM

Agenda



1

Background and Early Formation

2

Organizational Overview

3

Metrics Framework and Theory of Change

4

Discussion

5

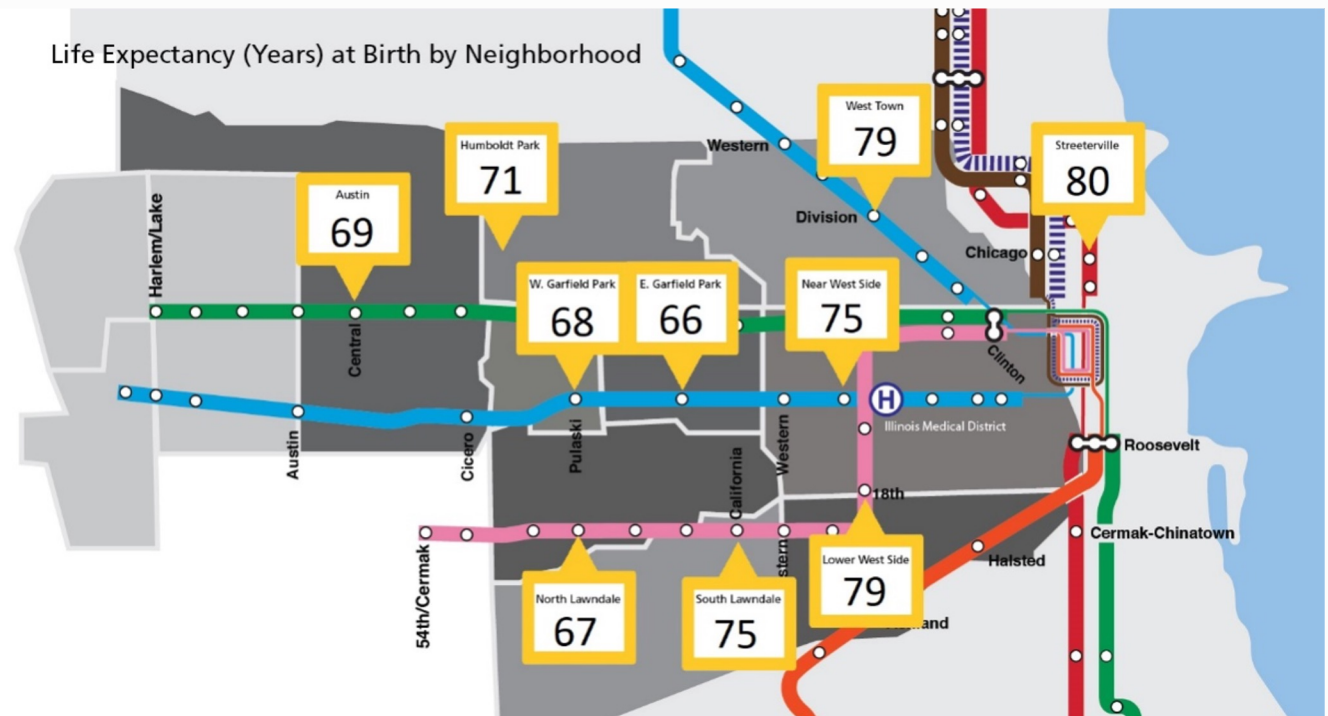
Q & A

The Death Gap

Average life expectancy on Chicago's West Side is up to 14 years less than the Loop

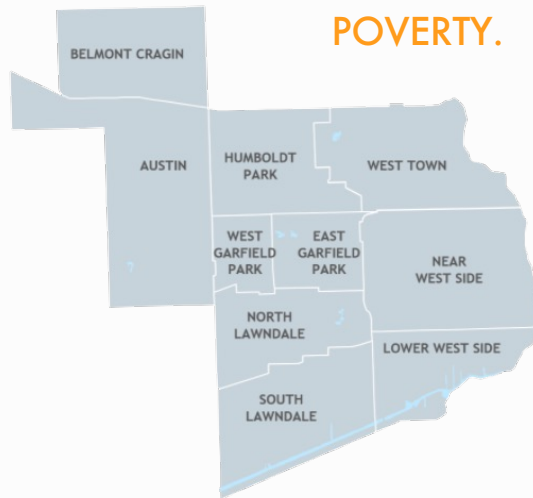
A white baby born today in the affluent West Loop neighborhood is likely to live to age 80.

A Black baby born just four miles away in East Garfield Park is likely to live just 66 years old.



Conditions on the West Side

HEALTH INEQUITIES IN THESE WEST SIDE NEIGHBORHOODS REFLECT DECADES OF DISINVESTMENT THAT HAS RESULTED IN CONCENTRATED POVERTY.

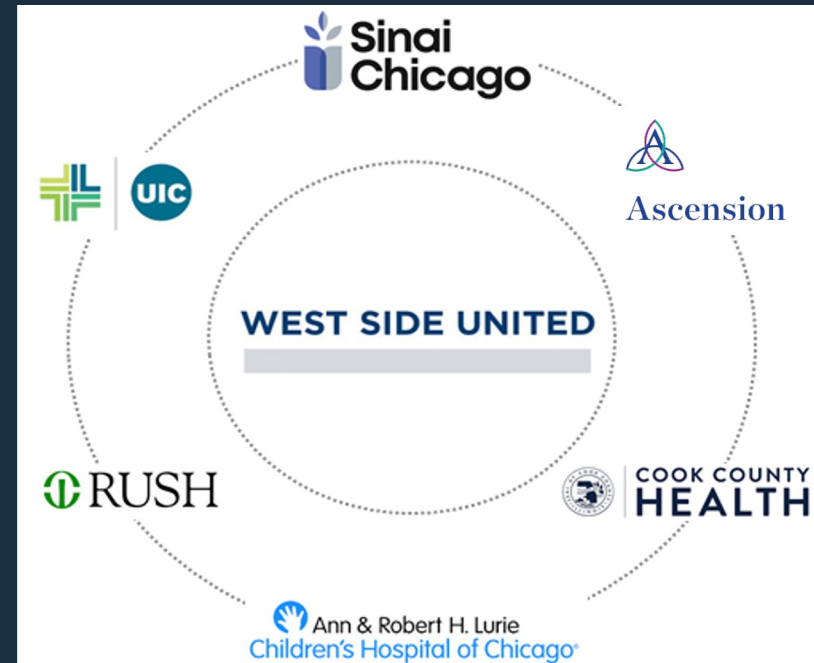


The nearly 550,000 people who live in the ten neighborhoods on the West Side of Chicago experience disproportionate rates of chronic disease, including diabetes, asthma, hypertension and congestive heart failure. While life expectancy for residents of the Loop is 80 years, the life expectancy for residents in East Garfield Park, only four miles away, is 66 years. WSU's mission is to eliminate this 14-year life expectancy gap between residents of the Loop and the West Side.

West Side United's Formation

West Side United is a health collaborative composed of six anchor hospitals as well as dozens of public, private, and non-profit partners.

We formed in 2018 following a series of stakeholder and resident conversations to understand community priorities.



MISSION PARTNERS

- American Medical Association

OUR FUNDERS

- A Better Chicago
- American Medical Association
- Anonymous Family Foundation
- AT&T
- Boeing
- Chicago Blackhawks Foundation
- Chicago Community Trust
- Chicago Community COVID-19 Response Fund
- Chris Redd's COVID-19 Protest Relief Fund
- Chicago Regional Food System Fund
- Clara Lionel Foundation
- Denny and Laurie Thorley
- Edwardson Family Foundation
- Healthcare Transformation Collaborative / Wellness West
- Illinois Network Of Charter Schools
- John D. and Catherine T. MacArthur Foundation
- JPMorgan Chase Foundation
- Kids First Chicago
- Michael Reese Health Trust
- Molson Coors Beverage Company
- Momentum Fund of United Philanthropy Forum
- Oprah Winfrey Charitable Foundation
- Polk Bros. Foundation
- Robert Wood Johnson Foundation
- Rockefeller Foundation
- Start Small Foundation
- The Ballmer Group
- The Kroger Foundation
- Thorley Family Foundation
- Tito's Handmade Vodka
- United Way
- Verizon
- Walton Family Foundation
- Wintrust

EDUCATION

- A Better Chicago
- Benito Juarez High School
- Chicago Hope Academy
- Chicago Public Schools
- Communities In Schools of Chicago
- Cristo Rey Jesuit High School
- Forty Acres Fresh Market
- George Westinghouse College Prep
- Hansra Consulting
- Herzl School of Excellence
- Homan Square Foundation
- Illinois Center for Rehabilitation & Education
- Illinois Medical District
- Illinois State University
- Illinois Student Assistance Commission
- Infinity Math Science and Technology High School
- Innovare
- Instituto Health Science Career Academy High School
- ITW David Speer Academy
- Kids First Chicago
- Malcolm X College
- Maria Saucedo Scholastic Academy
- North Grand High School
- Orr Academy
- Phoenix Military Academy High School
- Richard T. Crane High School
- Roberto Clemente Community Academy High School
- Saint Ignatius College Prep
- Taft High School
- University of Illinois Chicago
- Thrive Chicago
- Top Box Foods
- UCAN
- UIC College Prep
- Westinghouse College Prep
- Whitney M Young High School
- World Language High School

WEST SIDE UNITED: Building Blocks to Better Health

Our Partners

COVID-19 RESPONSE

- 25th Ward Alderman
- AARP Illinois
- Abundant Venture Partners
- ACCESS Community Health
- Advocate Health
- Alivio Medical Center
- American Medical Association
- Arturo Velazquez Institute-City Colleges of Chicago
- ASI Services
- Austin Coming Together
- Breakthrough
- Buyer's Flea Market
- Chicago Department of Public Health
- Chicago Family Health Center
- Chicago Hispanic Health Coalition
- Chicago Office of The Mayor
- Chicago Park District
- Chicago Police Department
- Chicago Public Library
- Christian Community Health Center
- Civic Consulting Alliance
- County Care
- Depaul University
- Dialysis Patient Citizens
- Enlace Chicago
- Erie Family Health Centers
- Erie Neighborhood House
- Esperanza Health Centers
- Equal Hope
- Forty Acres Fresh Market
- Friend Health
- Garfield Community Service Center
- Gamaliel of Illinois
- Grace & Peace Church
- Greater Auburn Gresham Development Corporation
- Greater Garfield Park Missionary Baptist
- Humboldt Park Health
- I am ABLE
- Illinois Department of Public Health
- Illinois Kidney Alliance/Kivvit Chicago
- Kehren Center for the Arts
- Latinos Progresando
- Loretto Hospital
- Loyola University Chicago
- MAAFA Redemption Project
- Medical Home Network
- Mercy Hospital
- My Block My Hood My City
- National Kidney Foundation of Illinois
- New Life Church
- North Lawndale Christian Health Center
- Northwest Center
- Northwestern Medicine
- NowPow
- PCC Wellness
- Sinai Community Institute
- South Shore Works
- Southwest Organizing Project
- Stone Temple Missionary Baptist Church
- St. Anthony Hospital
- St. Bernard Hospital
- Swedish Covenant Hospital
- The Resurrection Project
- UCAN
- University of Chicago
- University of Chicago Biological Sciences
- University of Illinois Chicago
- Wellness West
- Willie Wilson Foundation
- YMCA

ECONOMIC VITALITY

- Allies for Community Business
- American Medical Association
- Austin African American Business Networking Association
- Austin Coming Together
- Chicago Community Learning Center
- Chicago Community Loan Fund
- Chicago Cook Workforce Partnership
- Chicago Urban League
- Chicagoland Healthcare Workforce Collaborative
- City Colleges of Chicago Foundation
- Department of Business Affairs and Consumer Protection
- Economic Strategies Development Corporation
- IFF
- Illinois Medical District
- JPMorgan Chase
- Little Village Chamber of Commerce
- LISC Chicago
- Malcolm X College
- National Able Network
- North Lawndale CDC
- North Lawndale Community Coordinating Council
- Northern Trust Corporation
- Northwest Center
- One Million Degrees
- Resurrection Project
- Skills for Chicagoland's Future
- St. Anthony Hospital
- Tukiendorf Training Institute
- West Side Forward
- Women's Business Development Center
- World Business Chicago

NEIGHBORHOOD & PHYSICAL ENVIRONMENT

- Alliance for Health Equity
- Bethel New Life
- Beyond Hunger
- Chicago Department of Public Health
- Chicago Food Policy Action Council
- Chicago Partnership for Health Promotion
- Circle Urban Ministries
- City of Chicago Food Equity Council
- Erie Family Health Centers
- European American Association
- Experimental Station
- Forty Acres Fresh Market
- Garfield Park Community Council
- Garfield Park Rite to Wellness Collaborative
- Greater Auburn-Gresham Development Corporation
- Greater Chicago Food Depository
- Harmony Community Church
- Heartland Alliance - Chicago FarmWorks
- Hope Community Church
- Iglesia Evangelica Emmanuel
- InPr-City Muslim Action Network
- La Casa Norte
- MAAFA Redemption Project
- Marillac House Food Pantry
- Marshall Square Resource Network
- Michigan Farmers Market Association
- Mission of Our Lady of the Angels Nation Builders
- New Life Centers of Chicagoland
- New Mount Pilgrim Church
- North Lawndale Community Coordinating Council
- Pilsen Food Pantry
- Project Forward
- Real Men Charities
- St. Martin's Church
- The Community Builders
- The Doula Part
- The Leaders Network
- The Salvation Army Chicago Temple
- Top Box Foods
- University of Illinois Chicago
- USDA Midwest Health Care Partners
- Yellow Banana
- YMCA of Metro Chicago

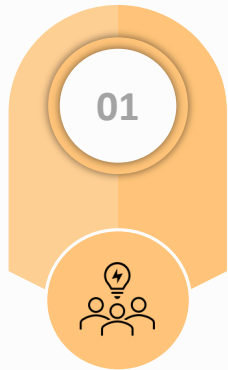
TECHNICAL PARTNERS

- Bain & Company
- Boston Consulting Group
- Bridgespan
- Catholic Charities
- Canon Solutions America, Inc
- CAN TV Chicago Access Network (Television)
- Civic Consulting Alliance
- Erie Family Health Center
- Foxglove Alliance
- Hansra Consulting
- HEAL Initiative
- Healthcare Anchor Network
- Homan Square Foundation
- Illinois Medical District
- Loretto Hospital
- Northshore Hospital
- Rudd Resources
- Rush BMO Institute for Health Equity
- Sinai Urban Health Institute
- Thresholds
- UIC School of Public Health
- University of Chicago Hospital

HEALTH & HEALTHCARE

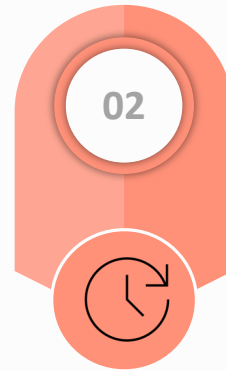
- ACCESS Community Health Network
- American Heart Association
- American Medical Association
- Austin Coming Together
- Bethel New Life
- Best Babies Zone
- Breakthrough
- City of Chicago
- El Valor
- Erie Family Health Centers
- Erie Neighborhood House
- Equal Hope
- Esperanza Health Centers
- Fathers Who Care
- FamilyConnects
- Gads Hill Center
- Garfield Park Wellness Collaborative
- Garfield Park Community Council
- Healthy Hood
- Lawndale Christian Health Center
- Medical Home Network
- Mount Sinai Hospital
- New Moms
- North Lawndale Employment Network
- PCC Wellness
- Puerto Rican Cultural Center
- Spanish Coalition for Housing
- St. Anthony Hospital
- Taller de Jose
- Thresholds
- United for Better Living
- Universidad Popular
- University of Illinois Chicago
- Wellness West Community Advisory Group
- Wellness West Race and Health Equity Committee
- West Side Health Authority
- Wyn-Win Communications

What We Strive For



Mission

To build community health and economic wellness on Chicago's West Side and build healthy, vibrant neighborhoods.



Vision

To improve neighborhood health by addressing inequities using cross-sector, place-based strategies.



Aim

To eliminate the life expectancy gap between the Loop and West Side neighborhoods of Chicago.

The Anchor Mission

Our systems collectively control massive resources...



\$4B

Annual
procurement
spend

40K

Employees

\$3B

Investments
(unrestricted)

...And small shifts can drive huge change

1% shift

in procurement to
local vendors



\$40M

1% shift

in workforce to
West Side residents



**400
jobs**

1% shift

in investments to
local projects



\$30M

WSU Anchor Mission Accomplishments since 2018

November 2023



LOCAL HIRING

5518

WS HIRES

16.5%

% WS HIRES
(2022)



LOCAL PROCUREMENT

\$197M+

LOCAL SPEND

0.75%

AVG % WS SPEND



SMALL BUSINESS GRANT POOL

\$2M

DISTRIBUTED
IN GRANTS

~150

WS BUSINESSES
SUPPORTED



IMPACT INVESTING

\$9.8M

ACTIVE INVESTMENTS

\$15.5M

INVESTED SINCE 2018
WITH "RECYCLED CAPITAL"

Community Contributions / Direct Investment

WSU hospital and anchor partners' directly invest in West Side communities that existing local workforce, purchasing, or investing initiatives do not capture.

2022 amounts	Forgivable loan	Grant	Other	Grand Total
Grand Total	\$500,000	\$4,872,272	\$7,267,314	\$12.6M
Examples	<i>Residency program at health clinic</i>	<ul style="list-style-type: none"> • <i>Community benefit grants to nonprofit organizations</i> • <i>Employee fundraiser donations</i> 	<ul style="list-style-type: none"> • <i>Food drive</i> • <i>Supply drive</i> • <i>Hospital professional services</i> • <i>Land sold for community asset development</i> 	

WSU Community Economic Development Partnerships

November 2023

SANKOFA WELLNESS VILLAGE

WEST GARFIELD PARK

\$50M+

DEVELOPMENT

- COMMUNITY ADVISORY GROUP
- WELLNESS CENTER, SMALL BUSINESS INCUBATOR, ARTS CENTER, AND COMMUNITY GROCER
- COMMUNITY ASSET & OWNERSHIP
- FUTURE OFFICE FOR WSU

MADISON/HAMLIN DEVELOPMENT

WEST GARFIELD PARK

\$80M+

DEVELOPMENT WITH COMMERCIAL, RESIDENTIAL, AND COMMUNITY GROCER

- PARTNERSHIP WITH DEVELOPERS
- RECRUITING SMALL BUSINESS TENANTS
- COORDINATING WITH COMMUNITY GROCER INITIATIVE
- COMMUNITY ENGAGEMENT

LAUNDRY LINEN LIAISON

NORTH LAWNSDALE

8-20M

POUNDS ANTICIPATED ANNUALLY

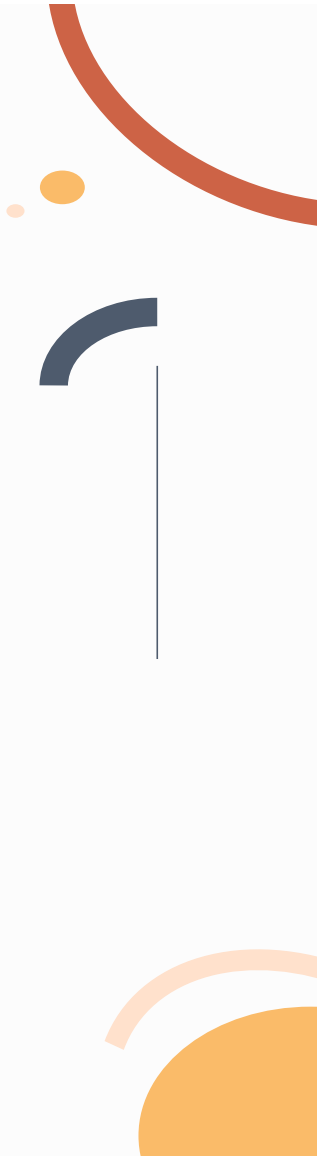
175

ANTICIPATED EMPLOYEES BY THIRD YEAR

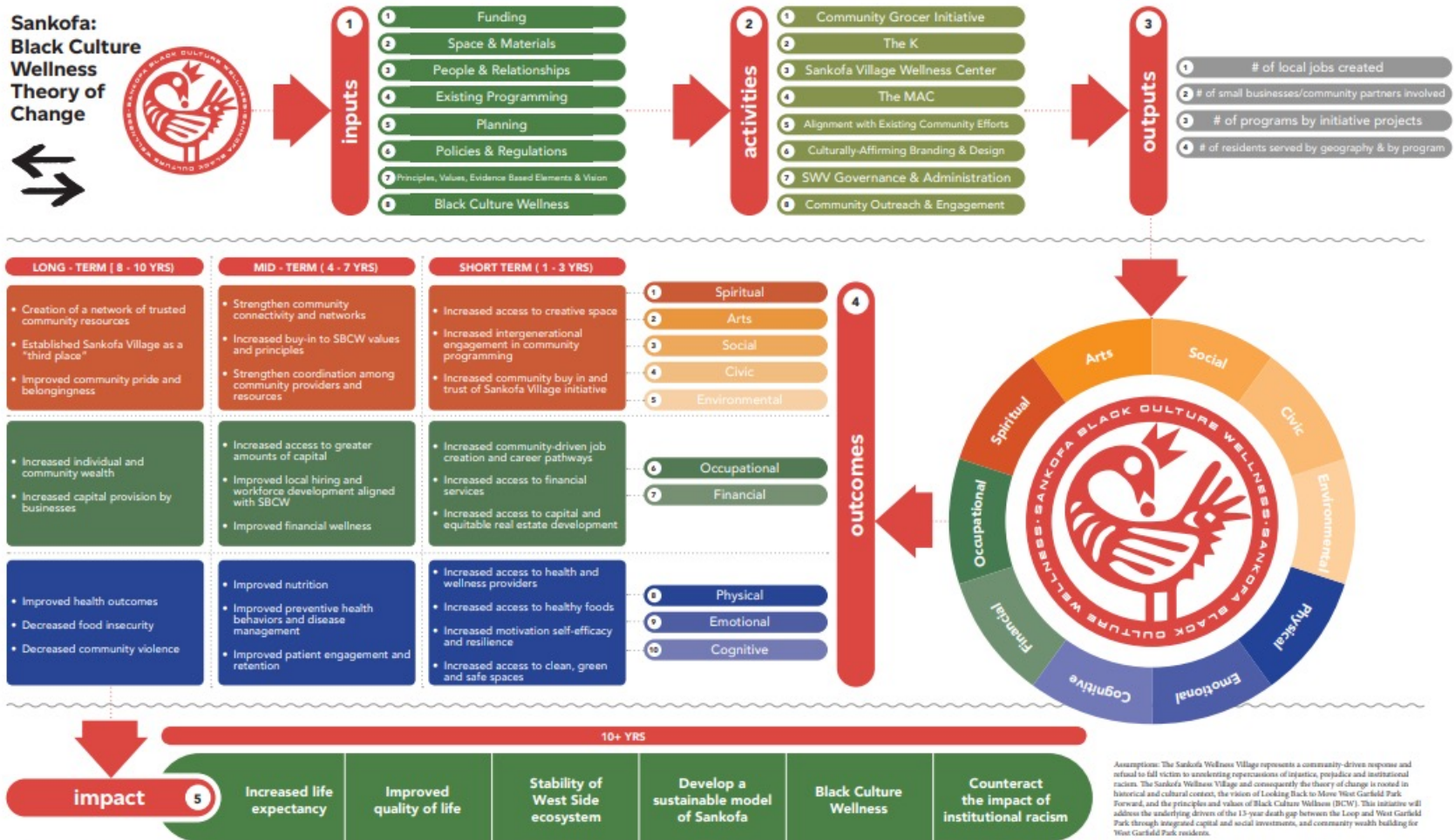
- PARTNERSHIP WITH FOUNDATION & DEVELOPERS
- LIAISE WITH HOSPITALS
- DUE DILIGENCE ON PROPOSED MODEL
- WORKFORCE DEVELOPMENT COORDINATION
- FUTURE COMMUNITY ASSET & OWNERSHIP

SAN KO FA

**LOOKING BACK
TO MOVE WEST
GARFIELD PARK
FORWARD**



Sankofa: Black Culture Wellness Theory of Change





The Sankofa Village Wellness Center



Community Grocer Initiative



The K



The MAC

Getting to the Goal: Identifying Drivers

Cardiometabolic Disease, Cancer, Infant Mortality, Homicide, and Opioid Overdose explain **50% to 73%** of the life expectancy gap between WSU communities and downtown

We then identified health metrics associated with each driver

Using decomposition and census tract analyses, we identified 5 primary drivers of the life expectancy gap

Eliminate the life expectancy gap and improve health

Overall Life Expectancy and Mortality Drivers of the Life Expectancy Gap

Life Expectancy

Cardiometabolic Disease (CM):
Coronary heart disease deaths
Stroke deaths
Diabetes deaths
Cardiovascular disease-related hospitalizations
Diabetes hospitalizations

Cancer (CN):
Cancer deaths
Cancer incidence

Infant Mortality (IM):
Infant mortality rate
Low birth weight
Preterm births

Homicide (H):
Homicides
Gun-related homicides

Opioid Overdose (OO):
Opioid-related overdose
Drug-related hospitalizations

Getting to the Goal: WSU Metrics Framework

WSU's measurement framework connects social determinants of health to clinical and social health outcomes and eventually to life expectancy.

We know from research that social assets, like the quality of early education, employment and family-sustaining wages, and neighborhood safety all impact health.

Tier I. WSU Overarching Goal (Community-Level Health, Mortality, and Life Expectancy Metrics)

Overall Life Expectancy and Mortality Drivers of the Life Expectancy Gap				
Life Expectancy				
Cardiometabolic Disease (CM): Coronary heart disease deaths Stroke deaths Diabetes deaths Cardiovascular disease-related hospitalizations Diabetes hospitalizations	Cancer (CN): Cancer deaths Cancer incidence	Infant Mortality (IM): Infant mortality rate Low birth weight Preterm births	Homicide (H): Homicides Gun-related homicides	Opioid Overdose (OO): Opioid-related overdose Drug-related hospitalizations

Tier II. WSU Domains of Impact (Domain-Related, Community-Level Metrics)

Education	Economic Vitality	Neighborhood & Physical Environment	Health and Healthcare
Targeted Outcomes: ALL Adult educational attainment Disconnected youth High school graduation 8 th Grade math proficiency rate 3 rd Grade reading proficiency rate Kindergarten readiness	Targeted Outcomes: ALL Individual poverty (% below FPL) Child poverty (% <18yo below FPL) Median income Living wage Unemployment (civilian, 16yo+)	Targeted Outcomes: <i>Food Environment:</i> Food insecurity ^{CM, CN, IM} Perceptions of healthy and affordable food access ^{CM, CN, IM} <i>Housing:</i> Housing cost burden ^{CN, IM} Vacancy rate ^{H, OO} <i>Safety and Community:</i> Perceptions of safety ^{ALL} Sense of community belonging ^{ALL} Non-fatal shooting rate ^{ALL} Violent crime ^{H, OO} Narcotics/vice crime ^{H, OO}	Targeted Outcomes: <i>Health Outcomes:</i> Obesity prevalence ^{CM, CN, IM} Psychological distress ^{IM, OO} Behavioral health hosp. ^{OO} Asthma ED visits (0 to 18 yo) Self-rated health ^{ALL} <i>Behaviors:</i> Fruit & vegetable eating ^{CM, CN, IM} Smoking ^{CM, CN, IM} Physical Activity ^{CM, CN, IM} Teen birth rate ^{IM} <i>Health Service Use:</i> Healthcare satisfaction ^{ALL} Received needed care ^{ALL} Early & adequate prenatal care ^{IM} Mammogram ^{CN} Cervical cancer screen ^{CN} Colorectal cancer screen ^{CN}



WEST SIDE UNITED: Building Blocks to Better Health

Note: This visual is not drawn to scale as an accurate map of Chicago's West Side.